

Health Equity Resource Guide



Over the course of a year, Maine Public Health Association's Health Equity Member Section organized a series of webinars on health equity. This toolkit provides recordings of all the presentations, speaker contact information and several resources that were shared throughout the series. It is the hope of the Member Section that this information will be useful to your work as you move from information to action in your efforts to advance health equity.

The goals of the series were to:

- Highlight and acknowledge specific programs and projects that are helping to advance health equity in Maine communities;
- Highlight and act on challenges to achieving health equity in Maine communities;
- Highlight social determinants of health that are specific to Maine communities; and
- Strengthen bridges for MPHA and other organizations to drive structure change, advocate for evidence-based public health policy, and advance health equity across Maine.

Webinar Recordings

- [An Introduction: From Information to Action in Health Equity](#)
- [Wabanaki Climate Justice, Health and Adaptation](#)
- [Defining and Addressing Health-Related Social Needs in Maine](#)
- [Homelessness, Housing, and Community Solutions](#)
- [What is Gender Affirming Care? Exploring and Remediating the Gaps in Accessing Healthcare for Transgender Youth in Maine](#)
- [The History & Contemporary Reality of Black Communities in Maine](#)
- [Race as a Social Construct in Data and Practice](#)
- [Connection Isn't Complicated: Youth Perspective on Mental Health Issues in Maine](#)
- [Outdoors for All](#)
- [Embedding a Health Equity Lens into Health Improvement Planning](#)

Speaker Contact Information

- Ian Yaffe - ian.yaffe@maine.gov
- Darren Ranco - darren.ranco@maine.edu
- Richard Hooks-Wayman - rich.hookswayman@voanne.org
- Lauren Bustard - lbustard@mainehousing.org
- Courtney Pladsen - cpladsen@nhchc.org
- Cullen Ryan - cullen@chomhousing.org
- Erin Healy - ehealy@community.solutions
- Aiden Campbell - aiden@outmaine.org
- Sue Campbell - sue@outmaine.org
- Pedro Vazquez - vazquezpedroa@gmail.com
- Myron Beasley - perfrombrazil@gmail.com
- Bob Greene - mebear1@gmail.com
- Bruce King - bruce@maineinsideout.org
- Keith Maddox - keith.maddox@tufts.edu
- Win Williams - wwilliams@nejm.org
- Gabe O'Brien - gabriel.obrien@opportunityalliance.org
- Enock Glidden - enockglidden@hotmail.org
- Liz Blackwell-Moore - blackwell-moore@cumberlandcounty.org
- Zoe Miller - zmstrategies@gmail.com

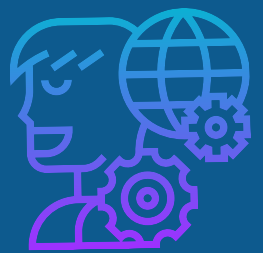
Tools & Resources

- [Public Health and Equity Resource Navigator](#)
- [Othering & Belonging Institute](#)
- [Place Matters: Opportunity Scholars](#)
- [A Public Health Framework for Reducing Health Inequities](#)
- [APHA's Structural Racism is a Public Health Crisis Statement](#)



Data Sources

- [Urban Indian Health Institute: Community Health Profiles](#)
- [Maine Community Health Needs Assessment Reports](#)
- [Maine Integrated Youth Health Survey](#)
- [Community Commons Priority Populations](#)



Community Stories

- [The Maine Experience: Malaga Island](#)
- [Malaga Island: A Story Best Left Untold](#)
- [The Long Story of Eugenics in America](#)
- [Malaga Island Fragmented Lives Educational Materials](#)
- [Boston. Racism. Image. Reality.](#)





Health Equity Member Section

The work of the Health Equity Member Section is grounded in evidence and focused on public health initiatives. The Member Section focuses on a range of populations who have been systemically disadvantaged, leading to an increased likelihood of negative health outcomes. Projects are chosen based on group members' interests, knowledge and skillsets, along with available data, current events, and priorities for Maine and Maine Public Health Association.

MPHA's member sections provide professional development and networking, and opportunities for informing public health policy and education of other public health colleagues, lawmakers and people in Maine. Member section participants range from those who are new to public health to those with decades of experience.

Maine Public Health Association

The mission of MPHA is to improve and sustain the health and well-being of all people in Maine through health promotion, disease prevention, and the advancement of health equity. MPHA is a statewide, non-profit membership organization that promotes a healthy Maine through advocacy, education, community connection, and coalition-building. MPHA implements the following strategies to achieve its mission:

- Provide leadership in public health;
- Advance local, state and federal public health policy;
- Promote and provide public health training and education; and
- Recognize model programs and public health leaders in Maine.

MPHA has longstanding partnerships with several public health organizations across the state. MPHA is also an affiliated association of the American Public Health Association (APHA). We have collaborated with APHA to grow stronger as organizations, to share expertise, influence, and resources, and to advocate for common priorities at the local, state and federal levels.

www.mainepublichealth.org

**To learn more and get
involved contact:
info@mainepublichealth.org**